



## Test Report

No.: GZ1008092083B/CHEM

Date: SEP 01, 2010

Page 1 of 5

PEERLESS INDUSTRIAL LIMITED  
LONGTAN TOWN, LONGMEN DISTRICT, HUIZHOU CITY, GUANGDONG PROVINCE, CHINA

This report is to supersede test report GZ1008092083A/CHEM  
Test report GZ1008092083A/CHEM is to supersede test report GZ1008092083/CHEM.

The following sample(s) was/were submitted and identified on behalf of the applicant as  
BBQ CATERING PARTY BAMBOO SKEWER AND PICK

SGS Job No. : GZHG1008011824CW  
Tested Sample Information : Style / Item No.: Flat Skewers, Boat Oar Skewer  
Client Reference Information : Style / Item No.: knotted pick/ Boast Oar Skewer / Double Prong Skewer /  
Flat Skewers/ Curve skewer / Top Twister / Side Twister/ Ring Display  
Skewers / Paddle Pick / Pine needle pick / Bamboo Tong / Black Willow  
pick; skewer/Boat Oar Skewer / Double Prong Skewer / Flat Skewers/  
Cocktail Fork / bead pick / Decorative Style / umbrella pick/ hippocampi  
pick / seacraft pick / Paddle Pick / toothpick/ Chopsticks Pick  
Date of Sample Received : AUG 11, 2010  
Testing Period : AUG 11, 2010 TO AUG 18, 2010

Test Requested : As specified by client, with reference to German Food, Articles of Daily Use and Feed Code  
of September 1, 2005 (LFGB), Section 30&31.  
1) Sensorial examination odour and taste test.  
2) For material: Wood – Pentachlorophenol (PCP) content.

Test Method : 1) Robinson's test with reference to DIN10955:2004-06  
Test condition : Odor test: 23 °C, 24 hours  
Taste test: Distilled water, 100 °C, 0.5 hour  
No. of panelist : Six  
2) With reference to LFGB § 64 BVL B 82.02.8 – 2001.  
Analysis was performed by GC-ECD

Test Results : Please refer to next page(s).

Conclusion : When tested as specified, the submitted sample(s) comply with the limit as stated in the  
German Food, Articles of Daily Use and Feed Code of September 1, 2005 LFGB), Section  
30&31.  
Hence, the submitted sample(s) comply with the general Requirement (Article 3) in EU  
Regulation (EC) No.1935/2004 on materials and articles intended to come into contact with  
food.

Signed for and on behalf of  
SGS-CSTC Ltd.

Leo Wang  
Approved Signatory

This document is issued by the Company under its General Conditions of Service printed overleaf or available on request and accessible at [http://www.sgs.com/terms\\_and\\_conditions.htm](http://www.sgs.com/terms_and_conditions.htm). Attention is drawn to the limitation of liability, indemnification and jurisdiction issues defined therein. Any holder of this document is advised that information contained hereon reflects the Company's findings at the time of its intervention only and within the limits of Client's instructions, if any. The Company's sole responsibility is to its Client and this document does not generate parties to a transaction from exercising all their rights and obligations under the transaction documents. Any unauthorized alteration, forgery or falsification of the content or appearance of this document is unlawful and offenders may be prosecuted to the fullest extent of the law.  
Unless otherwise stated, the results shown in this test report refer only to the sample(s) tested. This document cannot be reproduced except in full, without prior approval of the Company.



SGS - Standards Technical Services Co., Ltd.  
Guangzhou Industrial Chemical Laboratory

198 Kazhu Road, Sointech Park, Guangzhou Economic & Technology Development District, Guangzhou, China 510663 | (86-20) 82155555 | (86-20) 82075125 | www.cn.sgs.com  
中国·广州·经济技术开发区科学城科珠路198号 邮编: 510663 | (86-20) 82155555 | (86-20) 82075125 | e: sgs.china@sgs.com

Member of the SGS Group (SGS SA)

Results:

1)

Test Item	Result		Maximum Permissible Limit
	No.1	No.2	
Sensorial examination odour (Point scale)	0	0	2.5
Sensorial examination taste (Point scale)	0	0	2.5

Remark:

Odour / Taste	Grade
No difference from natural sample	0
Just barely perceivable difference	1
Weak but definable difference	2
Clearly perceivable difference	3
Strong difference	4

2)

Test Item	Result		Maximum Permissible Limit
	No.1	No.2	
PCP Content (mg/kg)	< 0.5	< 0.5	5

Note: 1. < = Less than  
2. mg/kg = milligram per kilogram

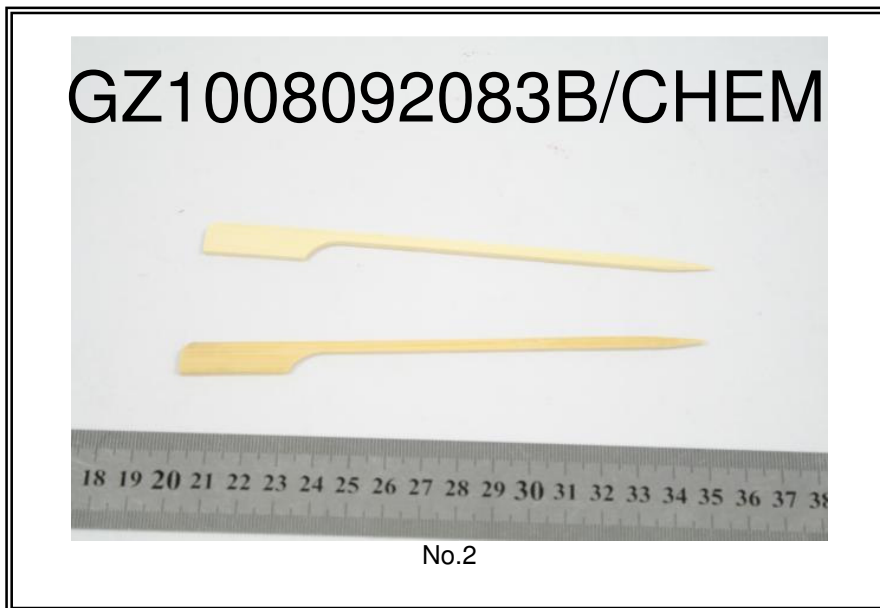
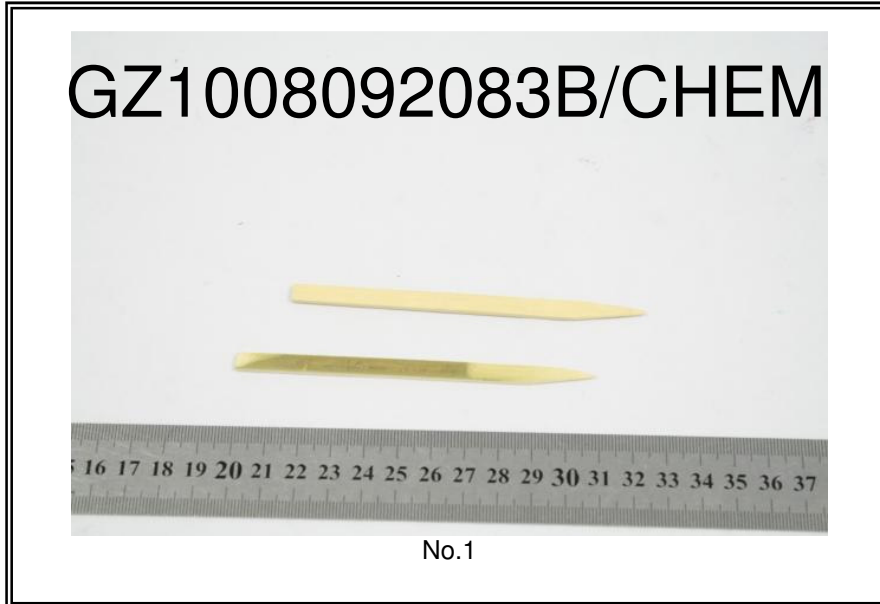
Specimen Description:

No.1 Bamboo pick  
No.2 Bamboo skewer

This document is issued by the Company under its General Conditions of Service printed overleaf or available on request and accessible at [http://www.sgs.com/terms\\_and\\_conditions.htm](http://www.sgs.com/terms_and_conditions.htm). Attention is drawn to the limitation of liability, indemnification and jurisdiction issues defined therein. Any holder of this document is advised that information contained hereon reflects the Company's findings at the time of its intervention only and within the limits of Client's instructions, if any. The Company's sole responsibility is to its Client and this document does not generate parties to a transaction from exercising all their rights and obligations under the transaction documents. Any unauthorized alteration, forgery or falsification of the content or appearance of this document is unlawful and offenders may be prosecuted to the fullest extent of the law. Unless otherwise stated, the results shown in this test report refer only to the sample(s) tested. This document cannot be reproduced except in full, without prior approval of the Company.

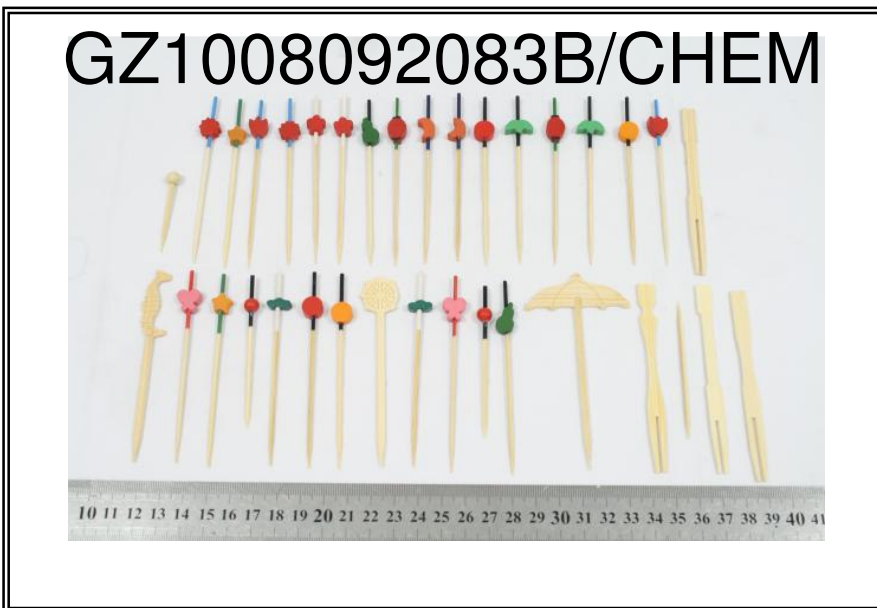


Sample photo :



This document is issued by the Company under its General Conditions of Service printed overleaf or available on request and accessible at [http://www.sgs.com/terms\\_and\\_conditions.htm](http://www.sgs.com/terms_and_conditions.htm). Attention is drawn to the limitation of liability, indemnification and jurisdiction issues defined therein. Any holder of this document is advised that information contained hereon reflects the Company's findings at the time of its intervention only and within the limits of Client's instructions, if any. The Company's sole responsibility is to its Client and this document does not generate parties to a transaction from exercising all their rights and obligations under the transaction documents. Any unauthorized alteration, forgery or falsification of the content or appearance of this document is unlawful and offenders may be prosecuted to the fullest extent of the law.





This document is issued by the Company under its General Conditions of Service printed overleaf or available on request and accessible at [http://www.sgs.com/terms\\_and\\_conditions.htm](http://www.sgs.com/terms_and_conditions.htm). Attention is drawn to the limitation of liability, indemnification and jurisdiction issues defined therein. Any holder of this document is advised that information contained hereon reflects the Company's findings at the time of its intervention only and within the limits of Client's instructions, if any. The Company's sole responsibility is to its Client and this document does not generate parties to a transaction from exercising all their rights and obligations under the transaction documents. Any unauthorized alteration, forgery or falsification of the content or appearance of this document is unlawful and offenders may be prosecuted to the fullest extent of the law.





SGS authenticate the photo on original report only

\*\*\* End of Report \*\*\*

This document is issued by the Company under its General Conditions of Service printed overleaf or available on request and accessible at [http://www.sgs.com/terms\\_and\\_conditions.htm](http://www.sgs.com/terms_and_conditions.htm). Attention is drawn to the limitation of liability, indemnification and jurisdiction issues defined therein. Any holder of this document is advised that information contained hereon reflects the Company's findings at the time of its intervention only and within the limits of Client's instructions, if any. The Company's sole responsibility is to its Client and this document does not generate parties to a transaction from exercising all their rights and obligations under the transaction documents. Any unauthorized alteration, forgery or falsification of the content or appearance of this document is unlawful and offenders may be prosecuted to the fullest extent of the law. Unless otherwise stated, the results shown in this test report refer only to the sample(s) tested. This document cannot be reproduced except in full, without prior approval of the Company.

